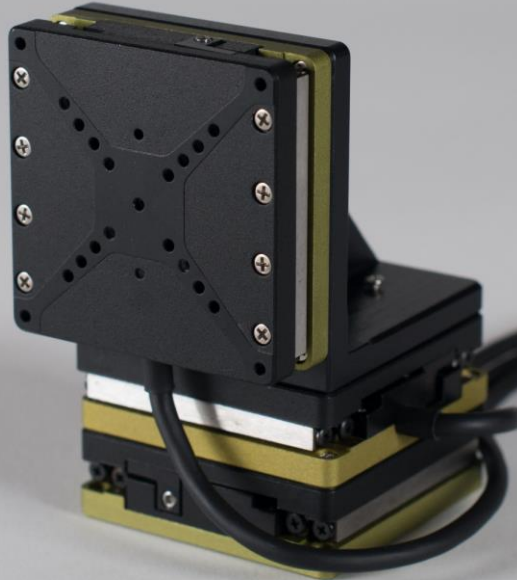


GO



Lift 0,5 kg @  
5 mm/s with  
nanometer  
resolution

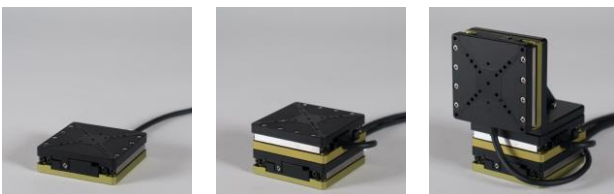
## PRECIBEO GO Stages

# Precise & Powerful Piezo Stages

### Nanometer Resolution Motion for Microscopy

The PRECIBEO GO Stages move with nanometer precision over centimeter distances, lift up to 500 grams and are self-locking at rest.

The PRECIBEO GO Stages come with an integrated position sensor and are designed for delivering the precision, load capacity and ease of use needed for fast and simple set up.

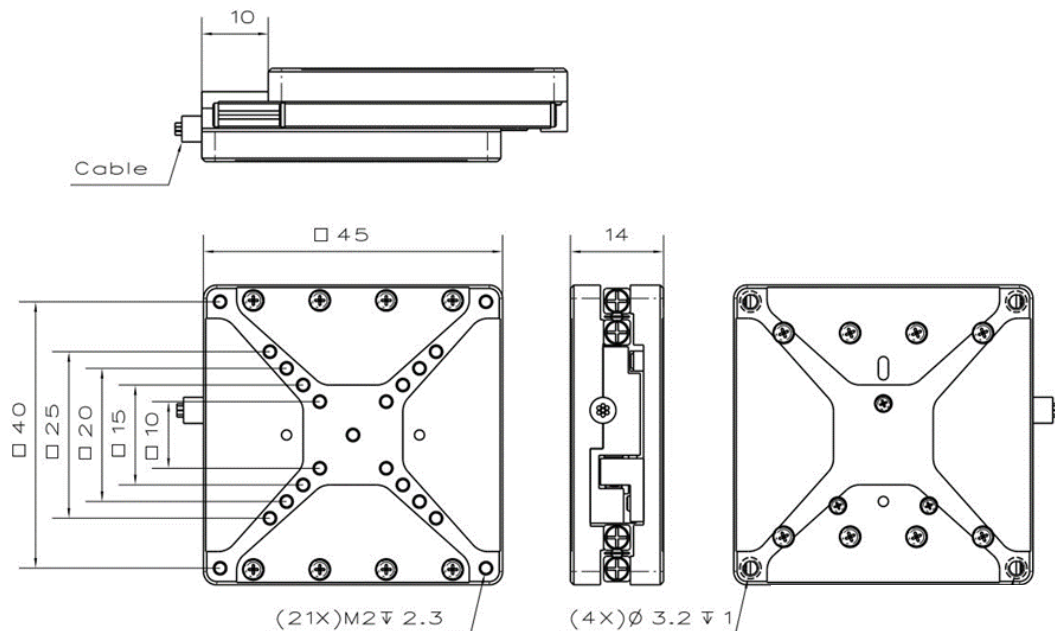


Choose one, two or three stages together with the optional L-bracket and create your multi axis system. Plug the stage cable connectors into the PRECIBEO GO Controller and you are ready to GO!

### Modular Multi Axis System

- 5 N Push / Pull Force
- Lifts up to 0,5 kg at >5 mm/s
- 2 nm Minimum Incremental Motion
- Smooth Continuous Motion
- Fast Step & Settling Times
- Self-Locking at Rest





## Technical Specification

| MODEL                              | GO STAGE LLS4545   |
|------------------------------------|--|
| <b>POSITIONING</b>                 |  |
| TRAVEL (X)                         | 20 mm (Stages with longer travel are available on request) |
| POSITION SENSOR                    | Optical Encoder  |
| SENSOR RESOLUTION                  | 2 nm   |
| MIN INCREMENTAL MOTION             | 2 nm   |
| BIDIRECTIONAL REPEATABILITY        | +/- 100 nm (typ. @ +/- 10mm travel)                        |
| LINEARITY                          | +/- 2 µm (typ.)  |
| PITCH                              | +/- 150 µrad (typ.)  |
| YAW                                | +/- 150 µrad (typ.)  |
| <b>MOTION</b>                      |  |
| MAX OPERATING FORCE (PUSH / PULL)  | 5 N (min.)   |
| HOLDING FORCE (WHEN POWER IS OFF)  | 6 N (min.)   |
| MAX SPEED (AT NO LOAD)             | 8 mm/s   |
| MAX SPEED (AT MAX OPERATING FORCE) | 5 mm/s (min.)  |
| <b>DRIVE TYPE</b>                  |  |
| MOTOR TYPE                         | Piezo LEGS Drive   |
| <b>MECHANICAL</b>                  |  |
| MAX LOAD (IN X,Y OR Z DIRECTION)   | 0,5 kg   |
| GUIDE TYPE                         | Crossed Roller Bearings                                    |
| SIZE                               | 45x45x14 mm  |
| WEIGHT (W/O CABLE & CONNECTOR)     | 75 g (+/-10%)  |
| <b>MISCELLANEOUS</b>               |  |
| CABLE                              | 2 m cable (+/-5%) with ix Industrial™ connector            |
| MATERIAL                           | Aluminum   |

## Order Information

Please contact us by phone ( +46 18 700 13 40 ) or email ([sales@precibeo.com](mailto:sales@precibeo.com)) for any enquiries.

| PRODUCT           | DESCRIPTION  |
|-------------------|--|
| <b>GO-LLS4545</b> | One GO Stage LLS4545 with Cable and Connector including: <ul style="list-style-type: none"> <li>4 M2 screws for mounting the stage to a substrate.</li> </ul>                                |
| <b>VM-LLS4545</b> | One L-Bracket for vertical mounting of the stages, e.g. YZ-configuration, including: <ul style="list-style-type: none"> <li>8 M2 screws for mounting two stages to the L-Bracket.</li> </ul> |

Disclaimer: Specifications of the product do not constitute a warranty of the properties. They are intended for information purposes only and are subject to change.